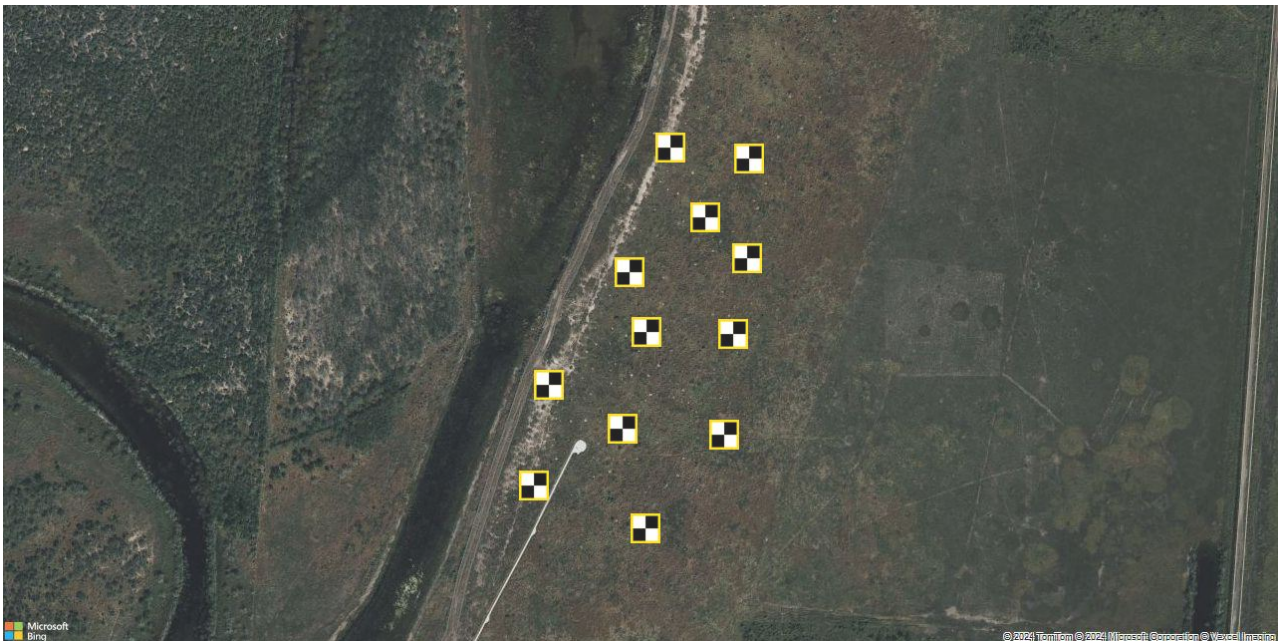




Ground Control Report

Palo Alto NE - R8s



Survey ID	as3edc7d6f
Aeropoint Set	
Date captured	27 Mar 2024 9:03 AM CDT
Points captured	12
Processing method	User supplied base station correction
Document generated	13 Jun 2024 4:00 PM CDT

Point 1



Point Number	1	Capture start	27 Mar 2024 9:03 AM CDT
Global ID	ac3784d73b	Capture end	27 Mar 2024 12:52 PM CDT
AeroPoint ID	2BA2A3FA	Duration	3:48
		Uploaded	27 Mar 2024 1:01 PM CDT

NAD83(2011)

Latitude	26.02656551° (26° 1' 35.63583" N)
Longitude	-97.4708102° (97° 28' 14.91672" W)
Ellipsoid height (NAD83(2011))	-16.071 m

NAD83(2011) / UTM zone 14N

Northing	2879521.922 m
Easting	653014.562 m

NAVD88 height

Height	5.859 m
--------	---------

Quality

Data points	2739
Points used	2739 (100.0%)
Baseline distance	1.17 km
Data variance	0.4 mm / 1.3 mm / 1.7 mm

Point 2



Point Number	2	Capture start	27 Mar 2024 9:07 AM CDT
Global ID	ac1a7a9de7	Capture end	27 Mar 2024 12:45 PM CDT
AeroPoint ID	B99DABB4	Duration	3:37
		Uploaded	27 Mar 2024 1:00 PM CDT

NAD83(2011)

Latitude	26.02478806° (26° 1' 29.23700" N)
Longitude	-97.47107349° (97° 28' 15.86457" W)
Ellipsoid height (NAD83(2011))	-16.32 m

NAD83(2011) / UTM zone 14N

Northing	2879324.728 m
Easting	652990.518 m

NAVD88 height

Height	5.608 m
--------	---------

Quality

Data points	2614
Points used	2614 (100.0%)
Baseline distance	0.20 km
Data variance	3.6 mm / 2.9 mm / 4.9 mm

Point 3



Point Number	3	Capture start	27 Mar 2024 9:11 AM CDT
Global ID	ac102c4e83	Capture end	27 Mar 2024 12:47 PM CDT
AeroPoint ID	E1E3DDDD9	Duration	3:36
		Uploaded	27 Mar 2024 1:00 PM CDT

NAD83(2011)

Latitude	26.02645801° (26° 1' 35.24883" N)
Longitude	-97.46996369° (97° 28' 11.86929" W)
Ellipsoid height (NAD83(2011))	-16.542 m

NAD83(2011) / UTM zone 14N

Northing	2879511.007 m
Easting	653099.417 m

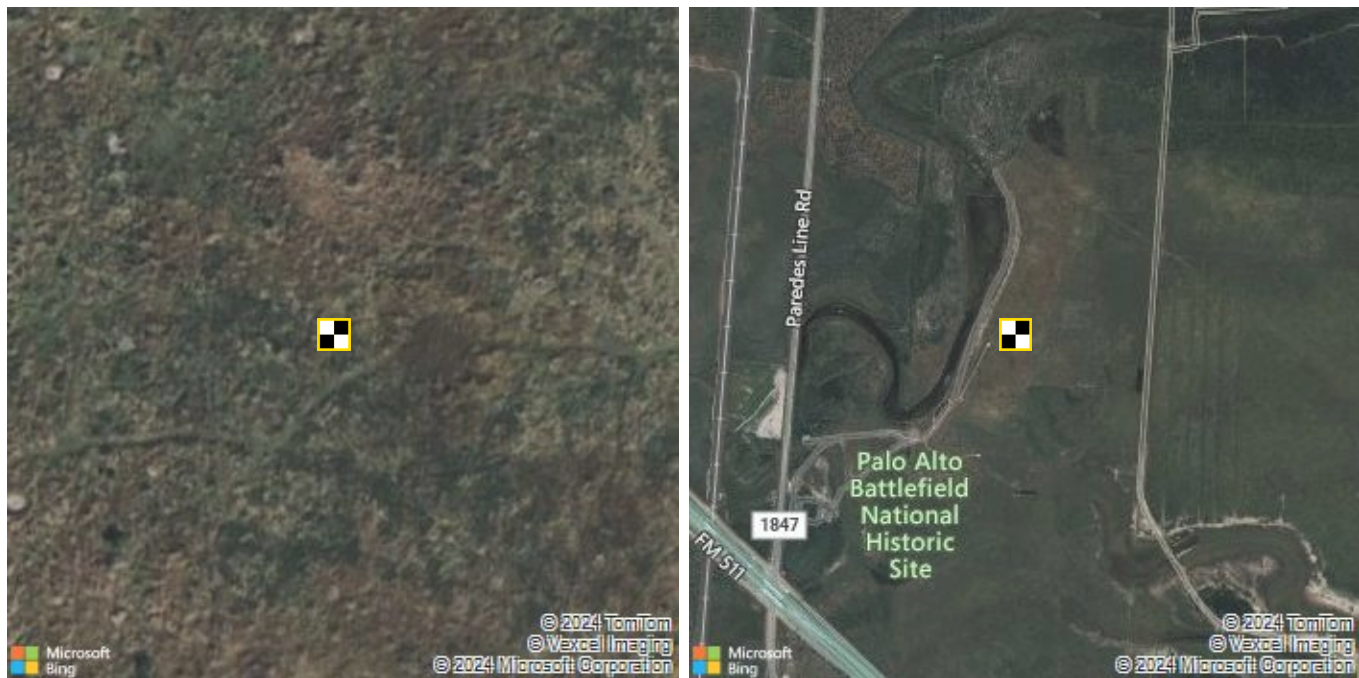
NAVD88 height

Height	5.385 m
--------	---------

Quality

Data points	2592
Points used	2590 (99.9%)
Baseline distance	0.09 km
Data variance	4.2 mm / 4.2 mm / 6.4 mm

Point 4



Point Number	4	Capture start	27 Mar 2024 9:14 AM CDT
Global ID	ac320ce4df	Capture end	27 Mar 2024 12:39 PM CDT
AeroPoint ID	9E3ED771	Duration	3:25
		Uploaded	27 Mar 2024 1:00 PM CDT

NAD83(2011)

Latitude	26.02379359° (26° 1' 25.65692" N)
Longitude	-97.47023069° (97° 28' 12.83047" W)
Ellipsoid height (NAD83(2011))	-16.845 m

NAD83(2011) / UTM zone 14N

Northing	2879215.561 m
Easting	653076.156 m

NAVD88 height

Height	5.079 m
--------	---------

Quality

Data points	2463
Points used	2463 (100.0%)
Baseline distance	0.31 km
Data variance	4.0 mm / 1.9 mm / 8.5 mm

Point 5



Point Number	5	Capture start	27 Mar 2024 9:19 AM CDT
Global ID	ac5cb2d7c0	Capture end	27 Mar 2024 12:39 PM CDT
AeroPoint ID	638CE531	Duration	3:20
		Uploaded	27 Mar 2024 1:00 PM CDT

NAD83(2011)

Latitude	26.02589197° (26° 1' 33.21108" N)
Longitude	-97.4704366° (97° 28' 13.57175" W)
Ellipsoid height (NAD83(2011))	-16.4 m

NAD83(2011) / UTM zone 14N

Northing	2879447.753 m
Easting	653052.825 m

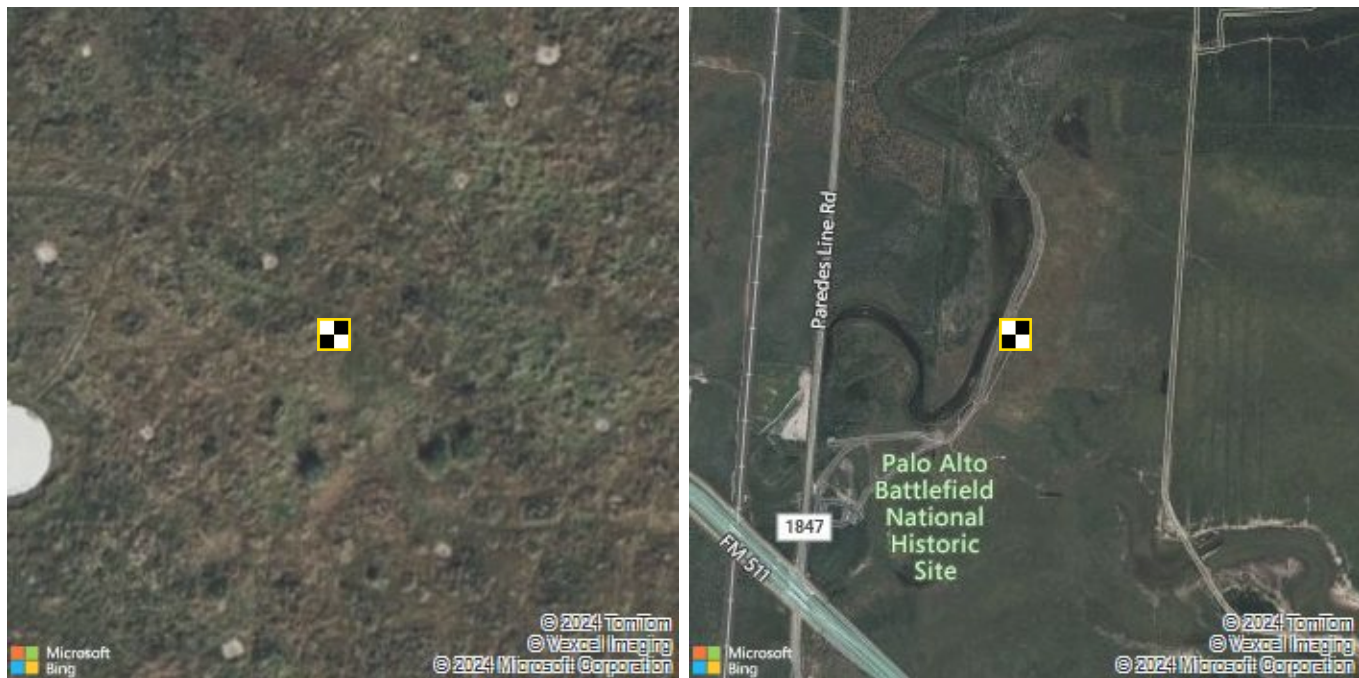
NAVD88 height

Height	5.528 m
--------	---------

Quality

Data points	2403
Points used	2403 (100.0%)
Baseline distance	0.08 km
Data variance	3.1 mm / 2.6 mm / 7.7 mm

Point 6



Point Number	6	Capture start	27 Mar 2024 9:21 AM CDT
Global ID	ac13ce0f56	Capture end	27 Mar 2024 12:34 PM CDT
AeroPoint ID	36EEFFEA	Duration	3:13
		Uploaded	27 Mar 2024 1:00 PM CDT

NAD83(2011)

Latitude	26.02384992° (26° 1' 25.85973" N)
Longitude	-97.47132981° (97° 28' 16.78732" W)
Ellipsoid height (NAD83(2011))	-16.356 m

NAD83(2011) / UTM zone 14N

Northing	2879220.512 m
Easting	652966.083 m

NAVD88 height

Height	5.571 m
--------	---------

Quality

Data points	2325
Points used	2325 (100.0%)
Baseline distance	0.31 km
Data variance	2.7 mm / 2.5 mm / 6.6 mm

Point 7



Point Number	7	Capture start	27 Mar 2024 9:25 AM CDT
Global ID	acba8031c8	Capture end	27 Mar 2024 12:35 PM CDT
AeroPoint ID	191B1DE6	Duration	3:09
		Uploaded	27 Mar 2024 1:01 PM CDT

NAD83(2011)

Latitude	26.0254959° (26° 1' 31.78523" N)
Longitude	-97.46998374° (97° 28' 11.94147" W)
Ellipsoid height (NAD83(2011))	-16.71 m

NAD83(2011) / UTM zone 14N

Northing	2879404.412 m
Easting	653098.66 m

NAVD88 height

Height	5.215 m
--------	---------

Quality

Data points	2279
Points used	2279 (100.0%)
Baseline distance	0.14 km
Data variance	2.1 mm / 2.4 mm / 6.1 mm

Point 8



Point Number	8	Capture start	27 Mar 2024 9:27 AM CDT
Global ID	ac25809841	Capture end	27 Mar 2024 12:30 PM CDT
AeroPoint ID	6F2125A1	Duration	3:02
		Uploaded	01 Apr 2024 10:09 AM CDT

NAD83(2011)

Latitude	26.02288125° (26° 1' 22.37250" N)
Longitude	-97.47107751° (97° 28' 15.87904" W)
Ellipsoid height (NAD83(2011))	-16.703 m

NAD83(2011) / UTM zone 14N

Northing	2879113.509 m
Easting	652992.589 m

NAVD88 height

Height	5.221 m
--------	---------

Quality

Data points	2188
Points used	2188 (100.0%)
Baseline distance	0.41 km
Data variance	3.2 mm / 2.4 mm / 7.1 mm

Point 9



Point Number	9	Capture start	27 Mar 2024 9:32 AM CDT
Global ID	ac627a8cb9	Capture end	27 Mar 2024 12:31 PM CDT
AeroPoint ID	E1AE15F5	Duration	2:58
		Uploaded	27 Mar 2024 1:00 PM CDT

NAD83(2011)

Latitude	26.02476409° (26° 1' 29.15072" N)
Longitude	-97.47013597° (97° 28' 12.48948" W)
Ellipsoid height (NAD83(2011))	-16.738 m

NAD83(2011) / UTM zone 14N

Northing	2879323.172 m
Easting	653084.375 m

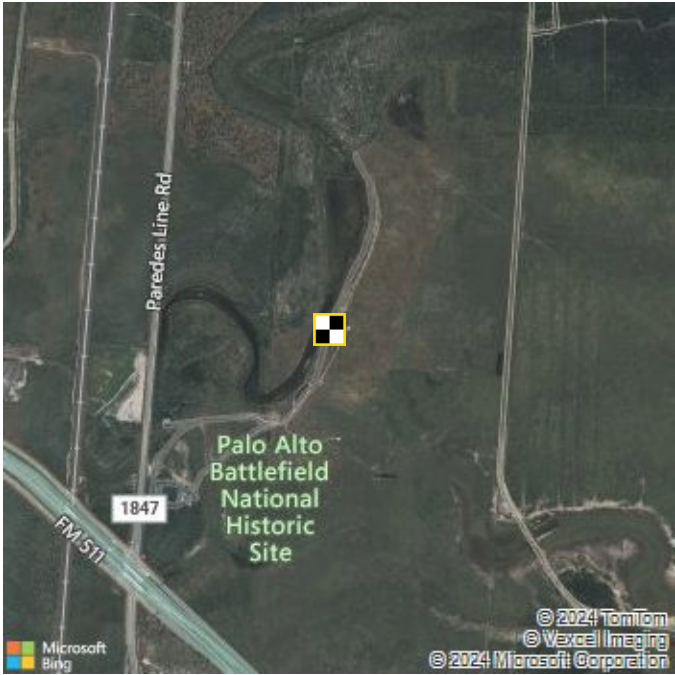
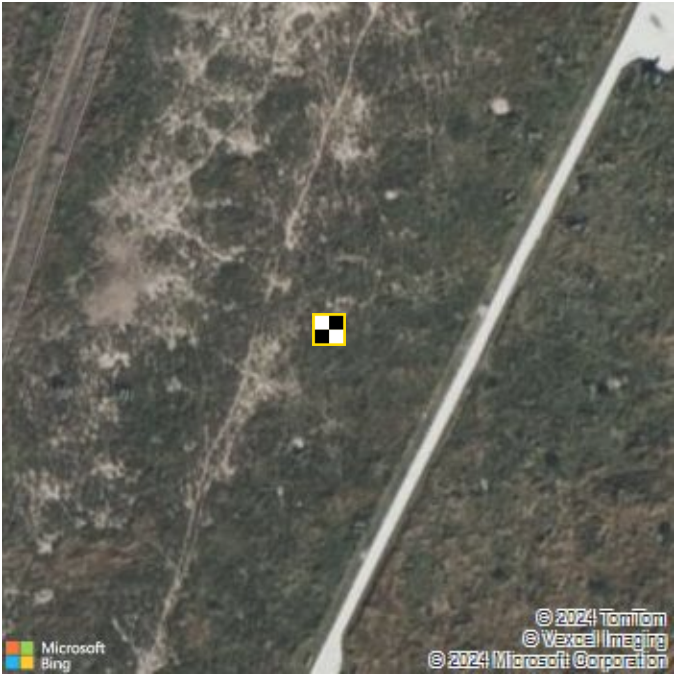
NAVD88 height

Height	5.187 m
--------	---------

Quality

Data points	2145
Points used	2145 (100.0%)
Baseline distance	0.21 km
Data variance	3.7 mm / 1.4 mm / 4.9 mm

Point 10



Point Number	10	Capture start	27 Mar 2024 9:35 AM CDT
Global ID	acb1e6618f	Capture end	27 Mar 2024 12:25 PM CDT
AeroPoint ID	D1C5E6BC	Duration	2:49
		Uploaded	27 Mar 2024 1:00 PM CDT

NAD83(2011)

Latitude	26.02329852° (26° 1' 23.87468" N)
Longitude	-97.47228617° (97° 28' 20.23023" W)
Ellipsoid height (NAD83(2011))	-16.382 m

NAD83(2011) / UTM zone 14N

Northing	2879158.314 m
Easting	652871.085 m

NAVD88 height

Height	5.547 m
--------	---------

Quality

Data points	2036
Points used	2036 (100.0%)
Baseline distance	0.39 km
Data variance	5.6 mm / 2.7 mm / 5.2 mm

Point 11



Point Number	11	Capture start	27 Mar 2024 9:39 AM CDT
Global ID	acb7c5a92f	Capture end	27 Mar 2024 12:23 PM CDT
AeroPoint ID	8D3CBEE6	Duration	2:44
		Uploaded	27 Mar 2024 1:02 PM CDT

NAD83(2011)

Latitude	26.02536145° (26° 1' 31.30124" N)
Longitude	-97.47124788° (97° 28' 16.49236" W)
Ellipsoid height (NAD83(2011))	-16.106 m

NAD83(2011) / UTM zone 14N

Northing	2879388.038 m
Easting	652972.322 m

NAVD88 height

Height	5.824 m
--------	---------

Quality

Data points	1970
Points used	1970 (100.0%)
Baseline distance	0.14 km
Data variance	4.2 mm / 2.4 mm / 8.2 mm

Point 12



Point Number	12	Capture start	27 Mar 2024 9:41 AM CDT
Global ID	ace601cedb	Capture end	27 Mar 2024 12:20 PM CDT
AeroPoint ID	6DCE4FEE	Duration	2:39
		Uploaded	27 Mar 2024 1:00 PM CDT

NAD83(2011)

Latitude	26.02427813° (26° 1' 27.40126" N)
Longitude	-97.47211646° (97° 28' 19.61924" W)
Ellipsoid height (NAD83(2011))	-16.331 m

NAD83(2011) / UTM zone 14N

Northing	2879267.022 m
Easting	652886.801 m

NAVD88 height

Height	5.599 m
--------	---------

Quality

Data points	1911
Points used	1911 (100.0%)
Baseline distance	0.29 km
Data variance	3.0 mm / 2.2 mm / 9.3 mm